

Appendix D - ENVIRONMENTAL JUSTICE OVERVIEWS

BARREN RIVER AREA DEVELOPMENT DISTRICT

Environmental Justice Review

U.S. 68 Scoping Study from Louie B. Nunn
Cumberland Parkway to Metcalfe/Green County
Border

Prepared for
Kentucky Transportation Cabinet (KYTC) – Division of Planning



Prepared by
Barren River Area Development District



This document was prepared in cooperation with the Kentucky Transportation Cabinet.

Contents

Introduction 1

What is Environmental Justice? 2

Methodology..... 3

Study Findings..... 4

 Population by Persons of Racial Minority Origin 4

 Chart 1: Racial Minority Population 4

 Population by Persons of Hispanic or Latino Origin..... 4

 Chart 2: Hispanic or Latino Origin Population..... 5

 Population by Persons Age 65 Years and Older 5

 Chart 3: Persons 65 and Older 5

 Population by Persons below Poverty Level 6

 Chart 4: Persons below Poverty Level..... 6

 Disabled Members of the Non-Institutionalized Population 6

 Chart 5: Disabled Members of the Non-Institutionalized Population 7

Conclusion..... 8

Appendices..... 9

 Appendix A: Map of Study Area 10

 Appendix B: Methodology from KYTC..... 11

 Appendix C: U.S. Census Data Tables for Study Area 13

 Statistics for Racial and Ethnic Minorities..... 14

 Statistics for Age, Poverty, and Disabled Populations 15

 Appendix D..... 16

Introduction

This report presents an overview of the findings for selected socioeconomic characteristics in the US 68 planning study area from the Louie B. Nunn Cumberland Parkway to the Metcalfe County-Green County border. The objective of the planning study is to identify both short-term spot improvements as well as some long-term solutions in which both approaches address traffic and safety concerns throughout the study area. The information in this report outlines 2008-2012 American Community Survey statistics in and near the project area using tables, charts, and maps. The purpose of the report is to analyze the data and identify potential populations that may be displaced or adversely impacted by the recommended improvements proposed in the planning study. Statistics are provided for minority, elderly, low-income and disabled populations for the nation, state, county and census tracts located within the project area.

This information is intended to aid the Kentucky Transportation Cabinet (KYTC) in making informed and prudent transportation decisions in the project area, especially with regard to the requirements of *Executive Order 12898: Federal Actions to Address Environmental Justice in Minority Populations and Low-Income Populations* (signed February 11, 1994). Executive Order 12898 states:

“...each Federal agency shall make achieving environmental justice part of its mission by identifying and addressing, as appropriate, disproportionately high and adverse human health or environmental effects of its policies, and activities on minority populations and low-income populations...”

The projects study area is located in Metcalfe County, beginning close to, but outside of, the northern city limits of Edmonton which is located in the Barren River Area Development District. Metcalfe County is located in the south central part of the state of Kentucky and covers a land area of 289.65 square miles. It is bordered on the north by Green County and to the west by Barren County. According to the 2008-2012 ACS, it has a population of 10,074 persons. The county seat is Edmonton, and it serves as the major economic center for the county. The 2008-2012 American Community Survey reported the City of Edmonton of having a population of 1,462 persons.

Metcalfe County is composed of three census tracts. The planning study area is situated in Census Tract (CT) 9601 and CT 9603. A map of the planning study area in relation to the CTs is displayed in Appendix A.

What is Environmental Justice?

The U.S. Department of Transportation (DOT) outlines three primary Environmental Justice Concepts as:

1. To avoid, minimize, or mitigate disproportionately high and adverse human health or environmental effects, including social and economic effects, on minority populations and low-income populations.
2. To ensure the full and fair participation by all potentially affected communities in the transportation decision-making process.
3. To prevent the denial of, reduction in, or significant delay in the receipt of benefits by minority population and low-income populations.

The U.S. DOT order defines minority as:

1. Black (a person having origins in any of the black racial groups of Africa);
2. Hispanic (a person of Mexican, Puerto Rican, Cuban, Central or South American, or other Spanish culture or origin, regardless of race);
3. Asian American (a person having origins in any of the original peoples of the Far East, Southeast Asia, the Indian subcontinent, or the Pacific Islands); or
4. American Indian and Alaskan Native (a person having origins in any of the original people of North America and who maintains cultural identification through tribal affiliation or community recognition).

A minority population is “any readily identifiable groups of minority persons who live in geographic proximity, and if circumstances warrant geographically dispersed/transient persons...”

Low-income is defined in U.S. DOT Order (5610.2) as “a person whose median household income is at or below the Department of Health and Human Services (HHS) poverty guidelines.” A low-income population is “any readily identifiable group of low-income persons who live in geographic proximity, and, if circumstances warrant, geographically dispersed/transient persons...”

A disproportionately high and adverse effect on a minority or low-income population means an adverse effect that:

1. Is predominately borne by a minority population and/or low-income population or
2. Will be suffered by the minority population and/or low-income population and is appreciably more severe or greater in magnitude than the adverse effect that will be suffered by the non-minority population and/or non-low-income population.

Elderly and disabled populations (also used in this analysis) are not specifically recognized under the definition of an Environmental Justice community. However, the U.S. DOT specifically encourages the early examination of potential population of the elderly, children, disabled, and other populations protected by the Title VI of the Civil Rights Act of 1964 and related nondiscrimination statuses.

Methodology

The data was collected using the method outlined by the KYTC document “Methodology for Assessing Potential Environmental Justice Concerns for KYTC Planning Studies” (See Appendix B). The demographics of the affected area should be defined using U.S. Census Bureau data and the percentages for minorities, low-income, elderly and disabled populations should be compared to the Census tracts and block groups, the county as a whole, the entire state and the United States.

The primary source of data for this report is the 2008-2012 US Census Bureau American Community Survey including tables:

- DP02
- DP03
- DP05

The Census tables (See Appendix C) in this report include the total number and percentages for minorities, elderly, low-income and disabled population levels for the census tract, county, state and nation. A method developed by the Ohio Department of Transportation (ODOT)¹ to identify target populations is applied in the data analysis. This report uses the population percentages for Metcalfe County as the reference threshold for identifying target populations. The county numbers were selected as the reference threshold because the project overlaps two census tracts. The county numbers most likely provide a better snapshot of the overall population characteristics of the two census tracts in the planning study area as opposed to the United States or state percentages.

In reviewing each census tract for target populations, an analysis range was determined based on the reference threshold in each of the four census categories reviewed in this report. This range was set at 25 percent above the threshold to 25 percent below the threshold (See Appendix D).

¹ (Ohio Department of Transportation, August 2002)

Study Findings

Population by Persons of Racial Minority Origin

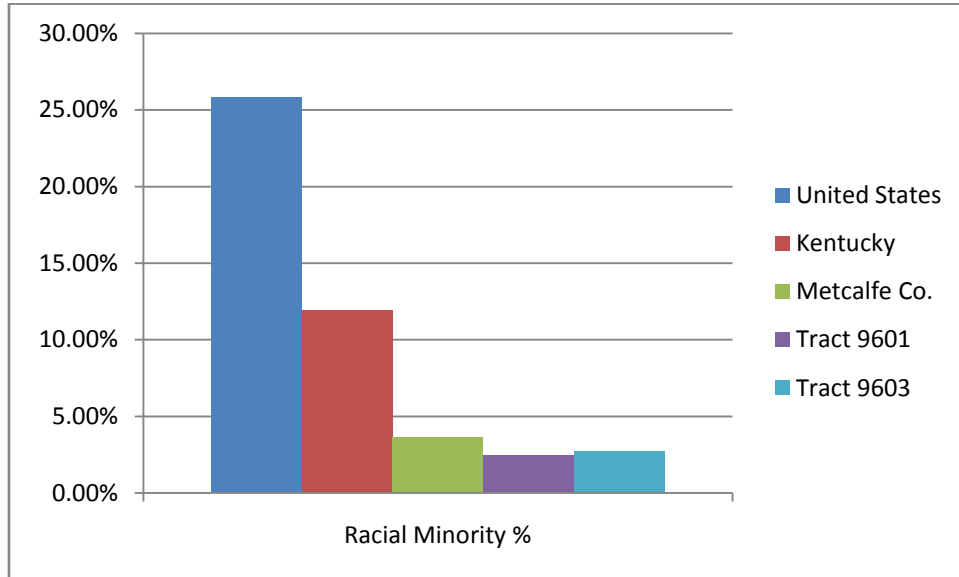


Chart 1: Racial Minority Population

Racial minorities in the United States make up 25.83% of the population, but in Kentucky that percentage drops significantly to just 11.91%. Metcalfe County displays an even lower percentage of racial minorities with only 3.64% being reported as racial minorities by the 2008-2012 American Community Survey. Census Tract (CT) 9601 has a minority population accounting for 2.42% of the CT's population which is significantly below the reference threshold. CT 9603 has a minority population that is, percentage wise, just below the reference threshold with 2.74% of the population reporting as a racial minority.

Population by Persons of Hispanic or Latino Origin

Persons of Hispanic or Latino origin are an ethnic minority group growing at a rapid rate nationwide. In the United States this group represents 16.35% of the total population. In Kentucky only 3.02% of the population was reported as being of Hispanic or Latino origin on the 2008-2012 ACS. Metcalfe County has an even lower representation of Hispanic or Latino individuals with only 1.21% of the county's population indicating they belong to this ethnic minority. The 2008-2012 ACS reported that CT 9601 had 2.08% which is significantly above the reference threshold, and CT 9603 had 0.58% of the population being of Hispanic or Latino origin which is significantly below the reference threshold.

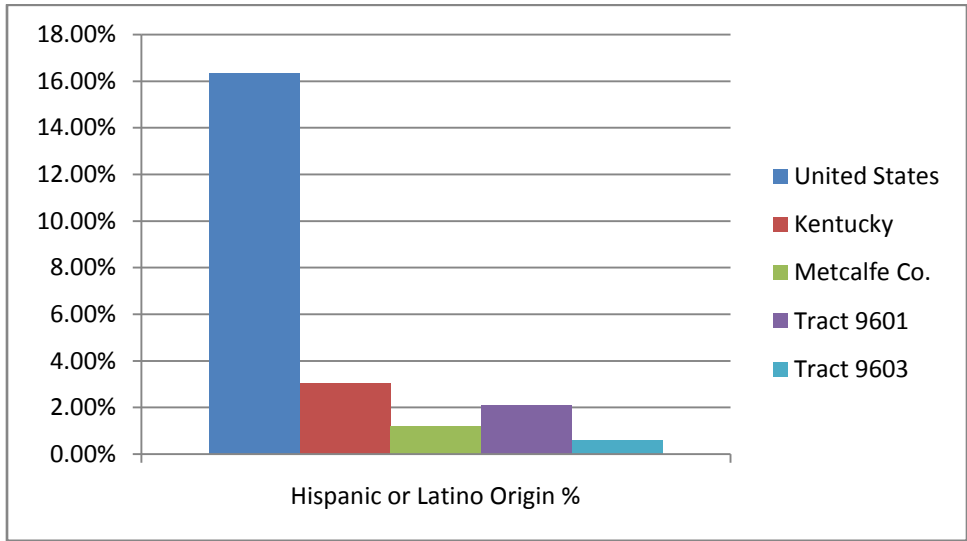


Chart 2: Hispanic or Latino Origin Population

Population by Persons Age 65 Years and Older

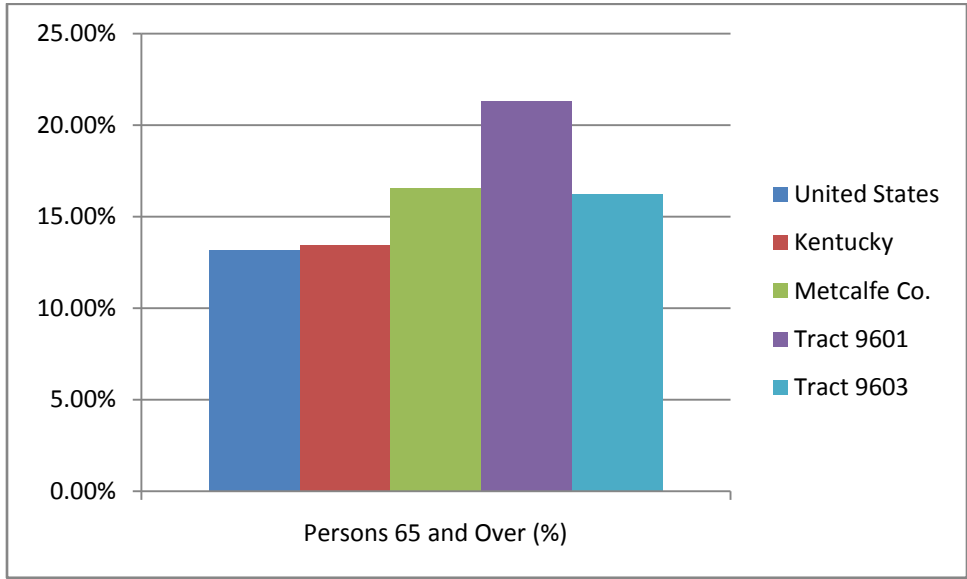


Chart 3: Persons 65 and Older

Metcalfe County has a much higher percentage (16.58%) of *Persons Age 65 Years and Older* than both the state (13.43%) and the U.S. (13.16%). Both CTs in the project area also have elevated percentages of elderly persons. CT 9601 is significantly above the reference threshold with 21.32% of persons being 65

years or older, and CT 9603 is just below the reference threshold with 16.20% of residents being 65 years or older.

Population by Persons below Poverty Level

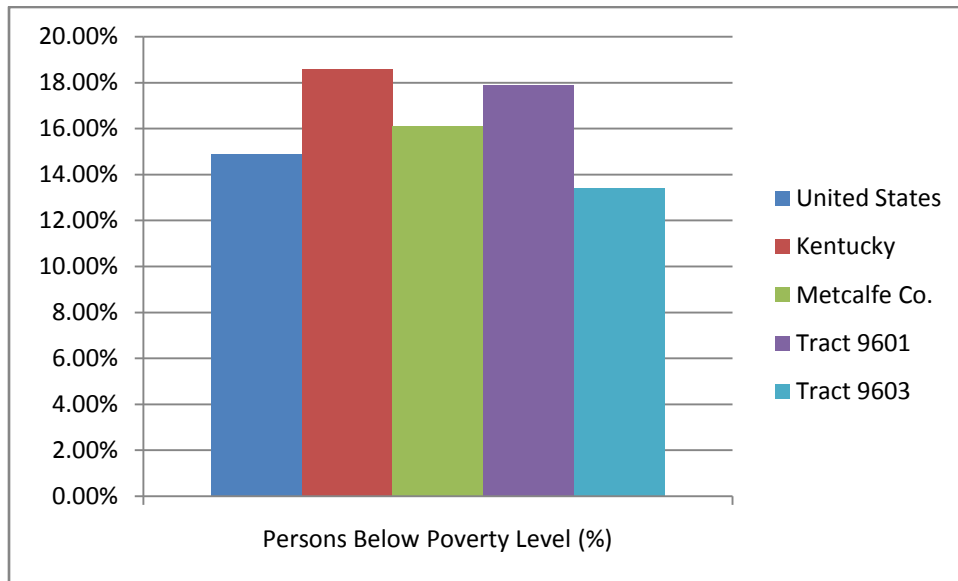


Chart 4: Persons below Poverty Level

The percentage of persons living below the poverty level in Kentucky (18.60%) is significantly higher than that of the United States (14.90%). Poverty levels in Metcalfe County are slightly lower than that of the state with 16.10% of Metcalfe County residents living below the poverty level. CT 9601 has greater levels of poverty than does the county, state and U.S. with 17.90% of persons living below the poverty level. This is just above the reference threshold. CT 9603 however has a lower level of poverty than Metcalfe County as a whole and the state, with 13.40% of residents living below the poverty level, which is just below the reference threshold.

Disabled Members of the Non-Institutionalized Population

According to 2008-2012 American Community Survey numbers, Kentucky had 16.74% percent of its population with some type of disability. This is considerably higher than the national percentage for disabled members of the non-institutionalized population (12.02%). In the same manner, Metcalfe County displays a higher percentage of disabled persons (20.69%) than does the state. 2008-2012 ACS data shows CT 9601 to have a percentage of disabled persons that is significantly above the reference

threshold (26.33%). CT 9603 has 17.68% of its population being reported as having a disability which is just below the reference threshold.

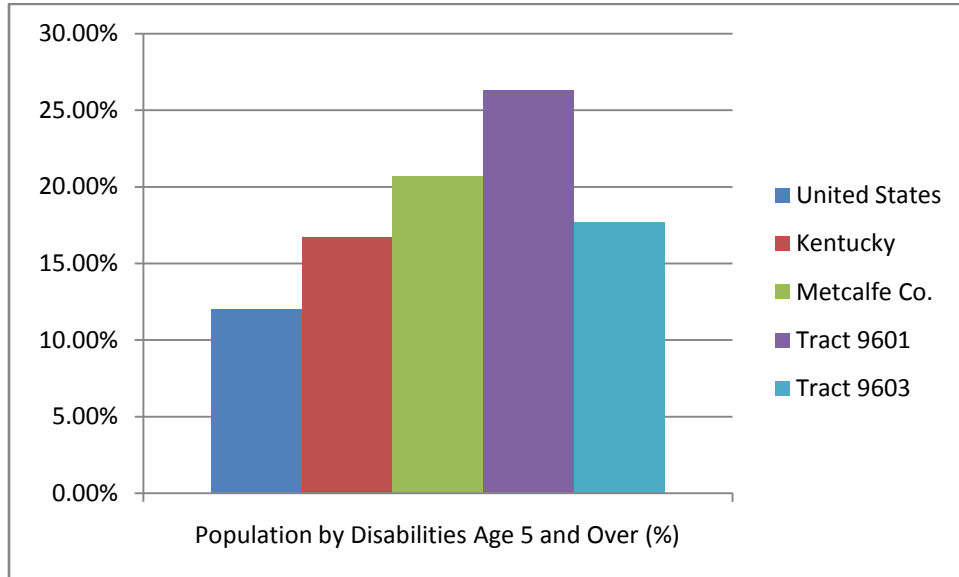


Chart 5: Disabled Members of the Non-Institutionalized Population

Conclusion

Based on the data obtained from the U.S. Census Bureau for race, ethnicity, age, income and disability there does not appear to be a defined environmental justice community within Census Tract 9603. Analysis of Census Tract 9601 shows an elevated percentage of ethnic minorities, elderly population, and disabled population located in this area. This Census Tract has an ethnic minority population percent that is 72% higher than the county overall. Census Tract 9601 also has a higher percentage of elderly citizens than does the county by 26%. The 2008-2012 American Community Survey also shows Census Tract 9601 to have a higher percentage of disabled individuals by 27%. These populations should be taken into consideration in the recommended short-term improvements and long-term solutions of the planning study.

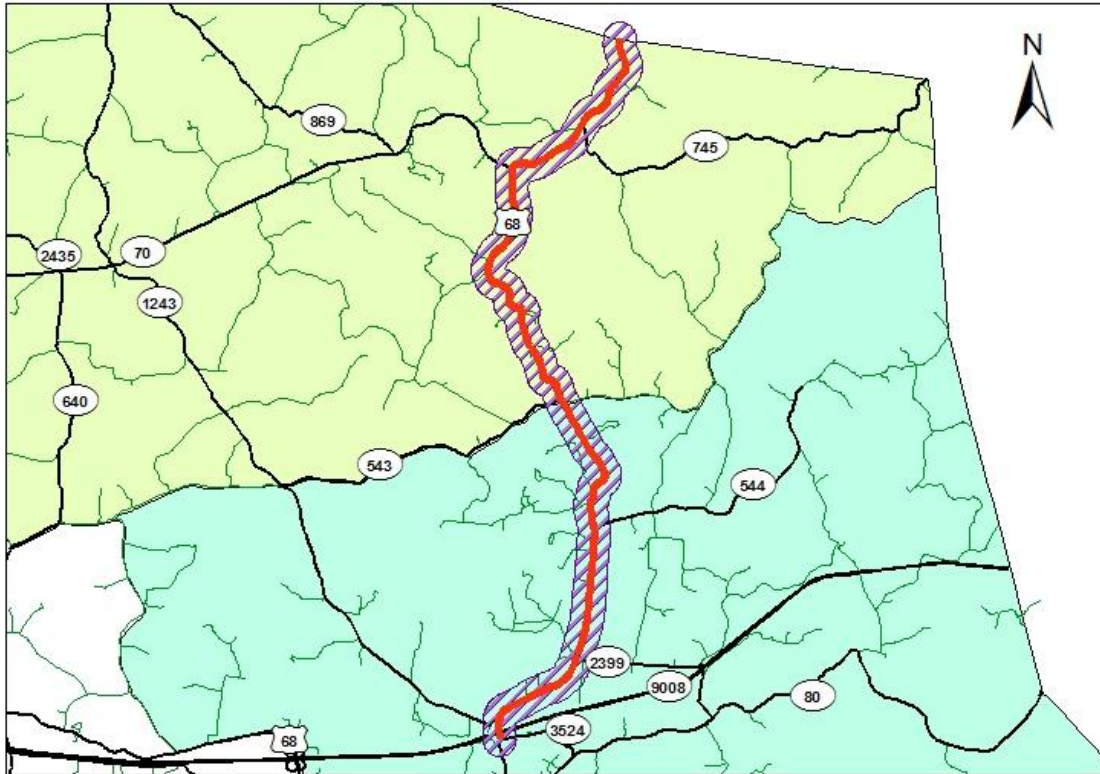
Census Tract 9601 covers one-third of the land area for Metcalfe County and the project area is located in the far eastern portion of the census tract. These environmental justice populations might not be condensed to a particular location. Although the ethnic minority, elderly, and disabled populations are significantly above the reference threshold for this census tract, there is not necessarily a concentrated population in this rural county. These areas should be noted in the future project planning and design phases and, if necessary, field visits, discussions with local officials and/or other sources of information should be consulted.

If applicable under the National Environmental Policy Act (NEPA), a more detailed analysis will be required when assessing the potential for adverse and disproportionate impacts to low-income and minority populations.




Appendices

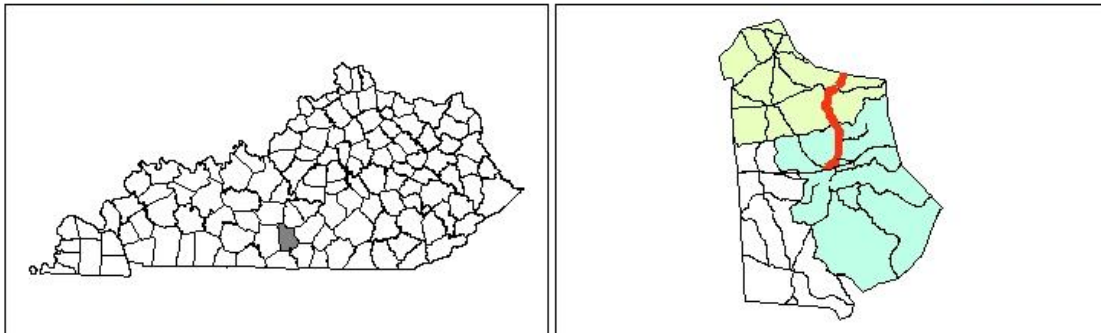
Appendix A: Map of Study Area

Census Tract Boundaries in Project Area US 68 Scoping Study Louie B. Nunn Cumberland Parkway to Metcalfe/Green County Line



Legend

— US 68  1000' Buffer — State Highways — US Highways **Tract**  9601  9603



Copyright 2013, Barren River Area Development District (BRADD). This map is created for general planning purposes ONLY. This map is not legally recorded, surveyed, or intended to be used for purposes other than generalized planning. Nor does it show all aspects or features of this particular area which may have changed over the years.

Appendix B: Methodology from KYTC

Methodology for Assessing Potential Environmental Justice Concerns for KYTC Planning Studies

Updated: February 1, 2002

The demographics of the affected area should be defined using U.S. Census data (Census tracts and block groups) and the percentages for minorities, low-income, elderly, or disabled populations should be compared to those for the following:

- Other nearby Census tracts and block groups,
- The county as a whole,
- The entire state, and
- The United States.

Information from PVA offices, social service agencies, local health organizations, local public agencies, and community action agencies can be used to supplement the Census data. Specifically, we are interested in obtaining the following information:

- Identification of community leaders or other contacts who may be able to represent these population groups and through which coordination efforts can be made.
- Comparison of the Census tracts and block groups encompassing the project area to other nearby Census tracts and block groups, county, state, and United States percentages.
- Locations of specific or identified minority, low-income, elderly, or disabled population groups within or near the project area. This may require some field reviews and/or discussions with knowledgeable persons to identify locations of public housing, minority communities, ethnic communities, etc., to verify Census data or identify changes that may have occurred since the last Census. Examples would be changes due to new residential developments in the area or increases in Asian and/or Hispanic populations.
- Concentrations or communities that share a common religious, cultural, ethnic, or other background, e.g., Amish communities.
- Communities or neighborhoods that exhibit a high degree of community cohesion or interaction and the ability to mobilize community actions at the start of community involvement.
- Concentrations of common employment, religious centers, and/or educational institutions with members within walking distance of facilities.
- Potential effects, both positive and negative, of the project on the affected groups as compared to the non-target groups. This may include, but are not limited to:
 1. Access to services, employment or transportation.
 2. Displacement of persons, businesses, farms, or non-profit organizations.
 3. Disruption of community cohesion or vitality.
 4. Effects to human health and/or safety.
- Possible methods to minimize or avoid impacts on the target population groups.

If percentages of these populations are elevated within the project area, it should be brought to the attention of the Division of Planning immediately so that coordination with affected populations may be

conducted to determine the affected population's concerns and comments on the project. Also, with this effort, representatives of minority, elderly, low-income, or disabled populations should be identified so that together, we can build a partnership for the region that may be incorporated into other projects. Also, we hope to build a Commonwealth-wide database of contacts. We are available to participate in any meetings with these affected populations or with their community leaders or representatives.

In identifying communities, agencies may consider as a community either a group of individuals living in geographic proximity to one another, or a geographically dispersed/transient set of individuals (such as migrant workers or Native Americans), where either type of group experiences common conditions of environmental exposure or effect. The selection of the appropriate unit of analysis may be a governing body's jurisdiction, a neighborhood, census tract, or other similar unit that is to be chosen so as not to artificially dilute or inflate the affected population. A target population also exists if there is (1) more than one minority or other group present and (2) the percentages, as calculated by aggregating all minority persons, exceed that of the general population or other appropriate unit of geographic analysis.

Maps should be included that show the Census tracts and block groups included in the analysis as well as the relation of the project area to those census tracts and block groups.

Appendix C: U.S. Census Data Tables for Study Area

Statistics for Racial and Ethnic Minorities

	Total	Total Minority	Minority %	Black or African American Alone	Black or African American Alone (%)	American Indian and Alaska Native Alone	American Indian and Alaska Native Alone (%)	Asian Alone	Asian Alone (%)
United States	309,138,711	79,839,805	25.83%	38,825,848	12.56%	2,529,100	0.82%	14,859,795	4.81%
Kentucky	4,340,167	516,823	11.91%	339,228	7.82%	8,607	0.20%	49,681	1.14%
Metcalfe Co.	10,074	367	3.64%	189	1.88%	0	0.00%	0	0.00%
Tract 9601	2,355	57	2.42%	44	1.87%	0	0.00%	0	0.00%
Tract 9603	4,667	128	2.74%	56	1.20%	0	0.00%	0	0.00%

	Total	Some other race alone	Some other race alone (%)	Two or more races	Two or more races (%)	Native Hawaiian and other Pacific Islander alone	Native Hawaiian and other Pacific Islander alone (%)	Hispanic or Latino Origin*	Hispanic or Latino Origin (%)*
United States	309,138,711	14,814,369	4.79%	8,296,291	2.68%	514,402	0.17%	50,545,275	16.35%
Kentucky	4,340,167	42,557	0.98%	74,380	1.71%	2,370	0.05%	131,039	3.02%
Metcalfe Co.	10,074	98	0.97%	74	0.73%	6	0.06%	122	1.21%
Tract 9601	2,355	0	0.00%	13	0.55%	0	0.00%	49	2.08%
Tract 9603	4,667	5	0.11%	61	1.31%	6	0.13%	27	0.58%

Source: US Census Bureau, 2008-2012 American Community Survey

Tables: DO02, DP03, & DP05

*Hispanic or Latino Origin represents ethnicity data rather than racial. These figures have been kept out of the calculation for total minority as they could result in duplication of individuals also reporting as a racial group listed in this table.

Statistics for Age, Poverty, and Disabled Populations

	Total	Persons 65 and Over	Persons 65 and Over (%)	Persons Whose Income in the Past 12 Months is Below the Poverty Level
United States	309,138,711	40,671,441	13.16%	14.90%
Kentucky	4,340,167	583,077	13.43%	18.60%
Metcalfe Co.	10,074	1,670	16.58%	16.10%
Tract 9601	2,355	502	21.32%	17.90%
Tract 9603	4,667	756	16.20%	13.40%

	Total Civilian Non-institutionalized Population	Disabled Members of the Civilian Non-institutionalized Population	Population by Disabilities Age 5 and Over (%)
United States	303,984,241	36,551,038	12.02%
Kentucky	4,251,528	711,788	16.74%
Metcalfe Co.	9,984	2,066	20.69%
Tract 9601	2,355	620	26.33%
Tract 9603	4,577	809	17.68%

Source: US Census Bureau, 2008-2012 American Community Survey

Tables: D002, DP03, & DP05

Appendix D

Analysis Range Explanation and Methodology for Population Percentages Above or Below the State Threshold

Percent Racial Minority

Analysis Range	Percent Minority
Significantly Above Threshold (> 125%)	> 4.55%
Just Above Threshold (100% - 125%)	3.64% - 4.55%
REFERENCE THRESHOLD (COUNTY PERCENTAGE)	3.64%
Just Below Threshold (75% - 100%)	2.73%-3.64%
Significantly Below Threshold (< 75%)	< 2.73%

Percent Hispanic or Latino Origin

Analysis Range	Percent Minority
Significantly Above Threshold (> 125%)	> 1.51%
Just Above Threshold (100% - 125%)	1.21% - 1.51%
REFERENCE THRESHOLD (COUNTY PERCENTAGE)	1.21%
Just Below Threshold (75% - 100%)	0.91% - 1.21 %
Significantly Below Threshold (< 75%)	< 0.91%

Percent 65 and Older

Analysis Range	Percent 65 and Older
Significantly Above Threshold (> 125%)	> 20.72%
Just Above Threshold (100% - 125%)	16.58% - 20.72%
REFERENCE THRESHOLD (COUNTY PERCENTAGE)	16.58%
Just Below Threshold (75% - 100%)	12.43% - 16.58%
Significantly Below Threshold (< 75%)	< 12.43%

Percent Below Poverty

Analysis Range	Percent Below Poverty
Significantly Above Threshold (> 125%)	> 20.13%
Just Above Threshold (100% - 125%)	16.10% - 20.13%
REFERENCE THRESHOLD (COUNTY PERCENTAGE)	16.10%
Just Below Threshold (75% - 100%)	12.08% - 16.10%
Significantly Below Threshold (< 75%)	< 12.08%

Percent Disabilities Age 5 and Over

Analysis Range	Percent Disabilities Age 5 and Over
Significantly Above Threshold (> 125%)	> 25.87%
Just Above Threshold (100% - 125%)	20.69% - 25.87%
REFERENCE THRESHOLD (COUNTY PERCENTAGE)	20.69%
Just Below Threshold (75% - 100%)	15.52% - 20.69 %
Significantly Below Threshold (< 75%)	<15.52%

Lake Cumberland Area Development District

Environmental Justice Review

U.S. 68 Scoping Study from
Metcalfe/Green County
Border to KY61

November 2013

Prepared for
Kentucky Transportation Cabinet (KYTC) – Division of Planning



Prepared by
Lake Cumberland Area Development District



This document was prepared in cooperation with the Kentucky Transportation Cabinet.

Contents

- Introduction 1
- What is Environmental Justice? 2
- What is Methodology 3
- Study Findings 4
 - Population by Persons of Racial Minority Origin 4
 - Chart 1: Racial Minority Population 4
 - Population by Persons of Hispanic or Latino Origin 4
 - Chart 2: Hispanic or Latino Origin Population 5
 - Population by Persons Age 65 Years and Older 5
 - Chart 3: Persons 65 and Older 5
 - Population by Persons below Poverty Level 6
 - Chart 4: Persons below Poverty Level 6
 - Population by Disabilities Age 5 and Over 6
 - Chart 5: Population by Disabilities Age 5 and Over 7
- Conclusion 8
- Appendices 9
 - Appendix A: Maps of Study Area 10
 - Appendix B: Methodology from KYTC 12
 - Appendix C: U.S. Census Data Tables for Study Area 14
 - Statistics for Racial and Ethnic Minorities 14
 - Statistics for Age, Poverty, and Disabled Populations 15
 - Appendix D Threshold Analysis 16

Introduction

This report presents an overview of the findings for selected socioeconomic characteristics in the US 68 planning study area from the Metcalfe County-Green County border to KY 61. The objective of the planning study is to identify both short-term spot improvements as well as some long-term solutions in which both approaches address traffic and safety concerns throughout the study area. The information in this report outlines Census 2010 statistics in and near the project area using tables, charts, and maps. The purpose of the report is to analyze the data and identify potential populations that may be displaced or adversely impacted by the recommended improvements proposed in the planning study. Statistics are provided for minority, elderly, low-income and disabled populations for the nation, state, county and census tracts located within the project area.

This information is intended to aid the Kentucky Transportation Cabinet (KYTC) in making informed and prudent transportation decisions in the project area, especially with regard to the requirements of *Executive Order 12898: Federal Actions to Address Environmental Justice in Minority Populations and Low-Income Populations* (signed February 11, 1994). Executive Order 12898 states:

“...each Federal agency shall make achieving environmental justice part of its mission by identifying and addressing, as appropriate, disproportionately high and adverse human health or environmental effects of its policies, and activities on minority populations and low-income populations...”

The projects study area is located in Green County, beginning at the Metcalfe/Green County Border continuing along US 68 to the intersection of KY 61 in the northern city limits of Greensburg which is located in the Lake Cumberland Area Development District. Green County is located in the south central part of the state of Kentucky and covers a land area of 286.03 square miles. It is bordered on the south by Metcalfe County and to the north by Taylor County. According to the 2010 Census, it has a population of 11,775 persons. The county seat is Greensburg, and it serves as the major economic center for the county. The 2010 Census reported the City of Greensburg of having a population of 2,163 persons.

Green County is composed of four census tracts. The planning study area is situated in Census Tract (CT) 9302, (CT) 9303 and CT 9304. A map of the planning study area in relation to the CTs is displayed in Appendix A.

What is Environmental Justice?

The U.S. Department of Transportation (DOT) outlines three primary Environmental Justice Concepts as:

1. To avoid, minimize, or mitigate disproportionately high and adverse human health or environmental effects, including social and economic effects, on minority populations and low-income populations.
2. To ensure the full and fair participation by all potentially affected communities in the transportation decision-making process.
3. To prevent the denial of, reduction in, or significant delay in the receipt of benefits by minority population and low-income populations.

The U.S. DOT order defines minority as:

1. Black (a person having origins in any of the black racial groups of Africa);
2. Hispanic (a person of Mexican, Puerto Rican, Cuban, Central or South American, or other Spanish culture or origin, regardless of race);
3. Asian American (a person having origins in any of the original peoples of the Far East, Southeast Asia, the Indian subcontinent, or the Pacific Islands); or
4. American Indian and Alaskan Native (a person having origins in any of the original people of North America and who maintains cultural identification through tribal affiliation or community recognition).

A minority population is “any readily identifiable groups of minority persons who live in geographic proximity, and if circumstances warrant geographically dispersed/transient persons...”

Low-income is defined in U.S. DOT Order (5610.2) as “a person whose median household income is at or below the Department of Health and Human Services (HHS) poverty guidelines.” A low-income population is “any readily identifiable group of low-income persons who live in geographic proximity, and, if circumstances warrant, geographically dispersed/transient persons...”

A disproportionately high and adverse effect on a minority or low-income population means an adverse effect that:

1. Is predominately borne by a minority population and/or low-income population or
2. Will be suffered by the minority population and/or low-income population and is appreciably more severe or greater in magnitude than the adverse effect that will be suffered by the non-minority population and/or non-low-income population.

Elderly and disabled populations (also used in this analysis) are not specifically recognized under the definition of an Environmental Justice community. However, the U.S. DOT specifically encourages the early examination of potential population of the elderly, children, disabled, and other populations protected by the Title VI of the Civil Rights Act of 1964 and related nondiscrimination statuses.

Methodology

The data was collected using the method outlined by the KYT document “Methodology for Assessing Potential Environmental Justice Concerns for KYT Planning Studies” (See Appendix B). The demographics of the affected area should be defined using U.S. Census data and the percentages for minorities, low-income, elderly and disabled populations should be compared to the Census tracts and block groups, the county as a whole, the entire state and the United States.

The primary source of data for this report is the US Census Bureau American Fact Finder 2010 including tables:

- 2010 US Census Summary File 1
 - DP-1 : Profile of General Population and Housing Characteristics
 - S0101: Age and Sex
- 2007-2011 American Community Survey 5-Year Estimates
 - S1701: Poverty Status in the Past 12 Months
- 2000 US Census Summary File 3
 - QT-P21: Disability Status by Sex**** (Census data for disabilities was not available at the county and census tract level using the 2010 Census. The data was obtained from using Census 2000 Decennial Census, Summary File 3 – Sample Data. Census 2010 disability data is expected to be available at the end of 2013)

The Census tables (See Appendix C) in this report include the total number and percentages for minorities, elderly, low-income and disabled population levels for the census tract, county, state and nation. A method developed by the Ohio Department of Transportation (ODOT)¹ to identify target populations is applied in the data analysis. This report uses the population percentages for Green County as the reference threshold for identifying target populations. The county numbers were selected for the reference threshold because the project overlaps three census tracts. The county numbers most likely provide a better snapshot of the overall population characteristics of the three census tracts in the planning study area as opposed to the United States or state percentages.

In reviewing each census tract for target populations, an analysis range was determined based on the reference threshold in each of the four census categories reviewed in this report. This range was set at 25 percent above the threshold to 25 percent below the threshold (See Appendix D).

¹ (Ohio Department of Transportation, August 2002)

Study Findings

Population by Persons of Racial Minority Origin

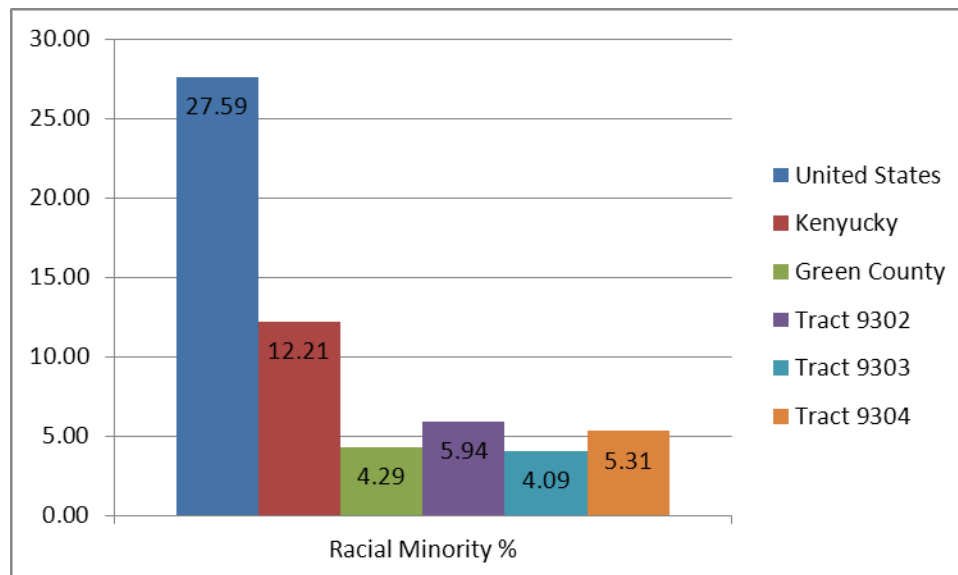


Chart 1: Racial Minority Population

Racial minorities in the United States make up 27.59% of the population, but in Kentucky that percentage drops significantly to just 12.21%. Green County displays an even lower percentage of racial minorities with only 4.29% being reported as racial minorities by the 2010 U.S. Census. Census Tract (CT) 9302 has a minority population accounting for 5.94% of the CT's population which is significantly above the reference threshold. CT 9304 has a minority population that is just above the reference threshold with 5.31%. CT 9303 has a minority population that is, percentage wise, just below the reference threshold with 4.09% of the population reporting as a racial minority.

Population by Persons of Hispanic or Latino Origin

Persons of Hispanic or Latino origin are an ethnic minority group growing at a rapid rate nationwide. In the United States this group represents 16.35% of the total population. In Kentucky only 3.06% of the population was reported as being of Hispanic or Latino origin by the 2010 U.S. Census. Green County has an even lower representation of Hispanic or Latino individuals with only 1.41% of the county's population indicating they belong to this ethnic minority. The 2010 U.S. Census reported that CT 9303 has a Hispanic or Latino origin population accounting for 2.23% which is significantly above the reference threshold. CT 9302 has a Hispanic or Latino origin population that is just below the reference threshold with 1.23%. CT 9304 has a Hispanic or Latino origin population that is, significantly below the reference threshold with 1.00% of the population reporting as Hispanic or Latino origin.

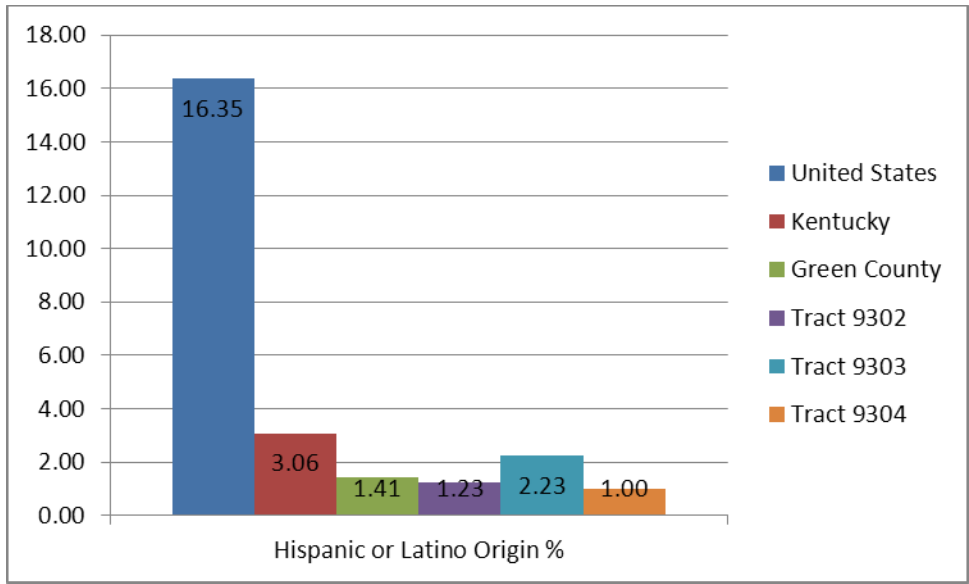


Chart 2: Hispanic or Latino Origin Population

Population by Persons Age 65 Years and Older

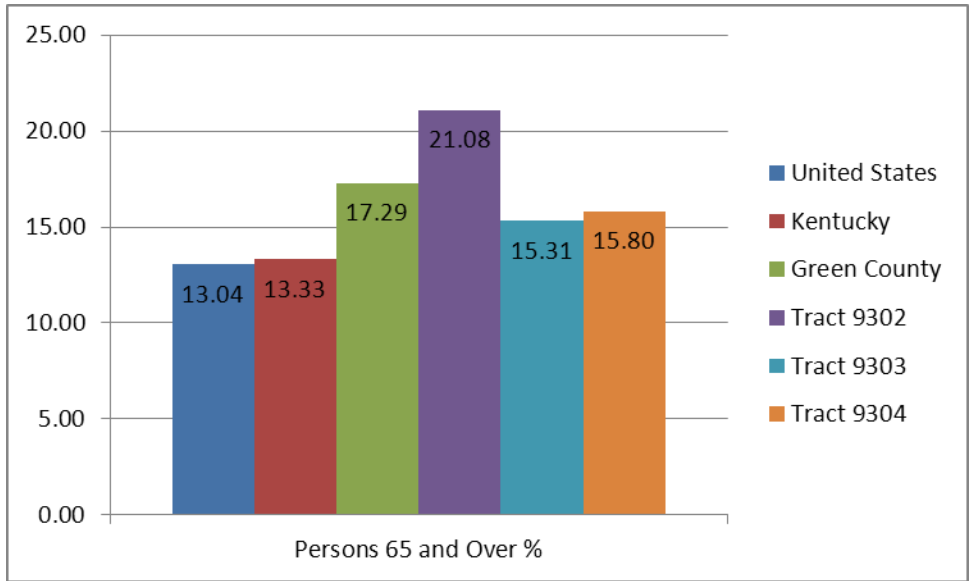


Chart 3: Persons 65 and Older

Green County has a much higher percentage (17.29%) of Persons Age 65 Years and Older than both the state (13.33%) and the U.S. (13.04%). This characteristic is very common with the counties in the Lake Cumberland Area Development District and south central Kentucky. All three CTs in the project area also have elevated percentages of elderly persons. CT 9303 and CT 9304 are just below the reference

threshold with 15.31% and 15.80% of persons being 65 years or older, and CT 9302 is just above the reference threshold with 21.08% of residents being 65 years or older.

Population by Persons below Poverty Level

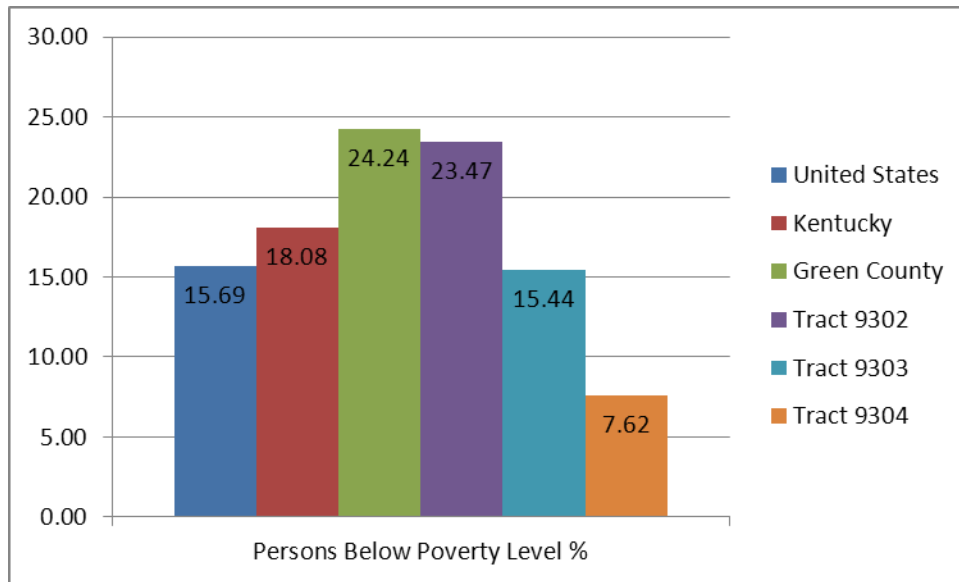


Chart 4: Persons below Poverty Level

The percentage of persons living below the poverty level in Kentucky (18.66%) is significantly higher than that of the United States (14.3%). Poverty levels in Green County have a much higher percentage (24.24%) below the poverty level. CT 9302 is just below the reference threshold with 23.47% of residents living below the poverty level. CT 9603 has poverty level of (15.44%) being less than that of the county or state and is equal to that of the United States. CT 9304 however has a lower level of poverty than that of county, state, or the nation, with 7.62% of residents living below the poverty level.

Population by Disabilities Age 5 and Over

At the time of this report (November 2013) Census 2010 data for disabled populations was not available at the state, county and census tract level. Since it is encouraged by KYTC methodology assessment for Environmental Justice concerns, and so as not to overlook any disadvantaged populations, the Census 2000 data was utilized as a reference for this particular demographic category. Because Kentucky’s population numbers have not changed significantly over the last two census counts, the 2000 data should give a fair assessment of current conditions.

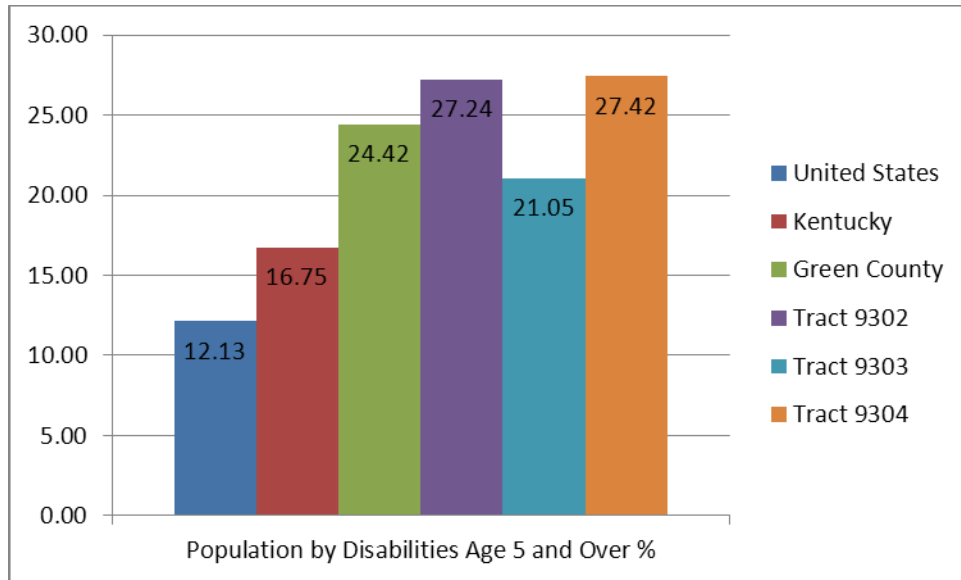


Chart 5: Population by Disabilities Age 5 and Over

According to the Disability Characteristics of the 2012 American Community Survey, Kentucky had 16.75% percent of its population over the age of five (5) years old with some type of disability. This is considerably higher than the national percentage for Population by Disabilities Age 5 and over (12.13%). In the same manner, Green County displays a higher percentage of disabled persons (24.42%) than does the state. 2012 American Community Survey data shows CT 9302 and CT 9304 is just above the reference threshold with 27.24% and 27.42% of disabled person age 5 and over. CT 9603 has 21.05% of its population of 5 and over being reported as having a disability which is just below the reference threshold.

Conclusion

Based on data obtained from the U.S. Census Bureau for income, race and age, discussions with local officials and field observations; it appears there are elevated levels of persons over 65 years of age in Green County. However, this population is evenly distributed throughout Green County and should not be affected.

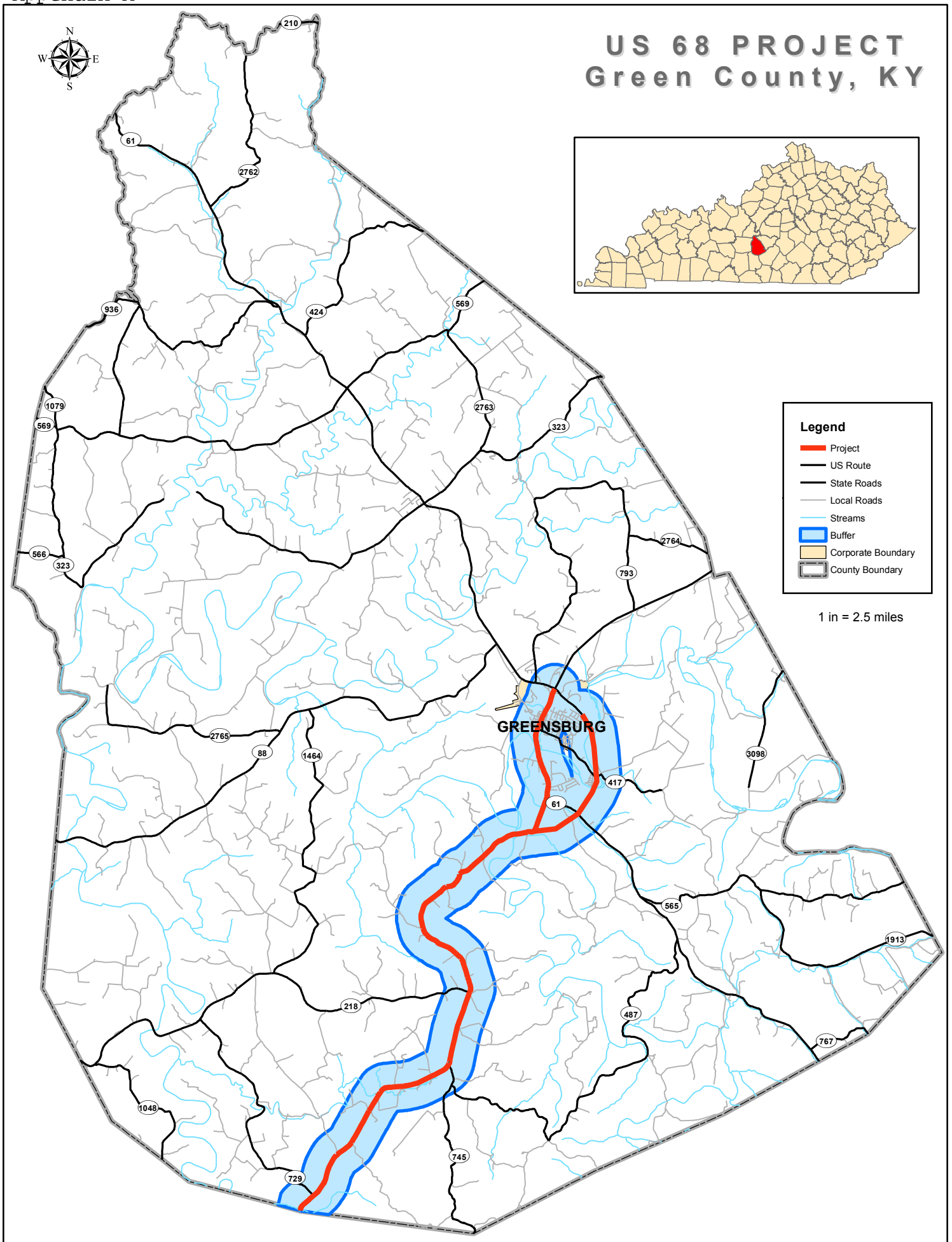
Analysis of the minority and Hispanic or Latino population data showed several of the block groups as having an identified concentration of some sort. Some were significant, some were only minor. The more significant concentrations identified were noted in the narrative analysis. All areas within this study should be given full consideration in the planning process to achieve the goals put forth by the U. S. Department of Transportation. The concentrations identified should not be adversely affected by improvements.

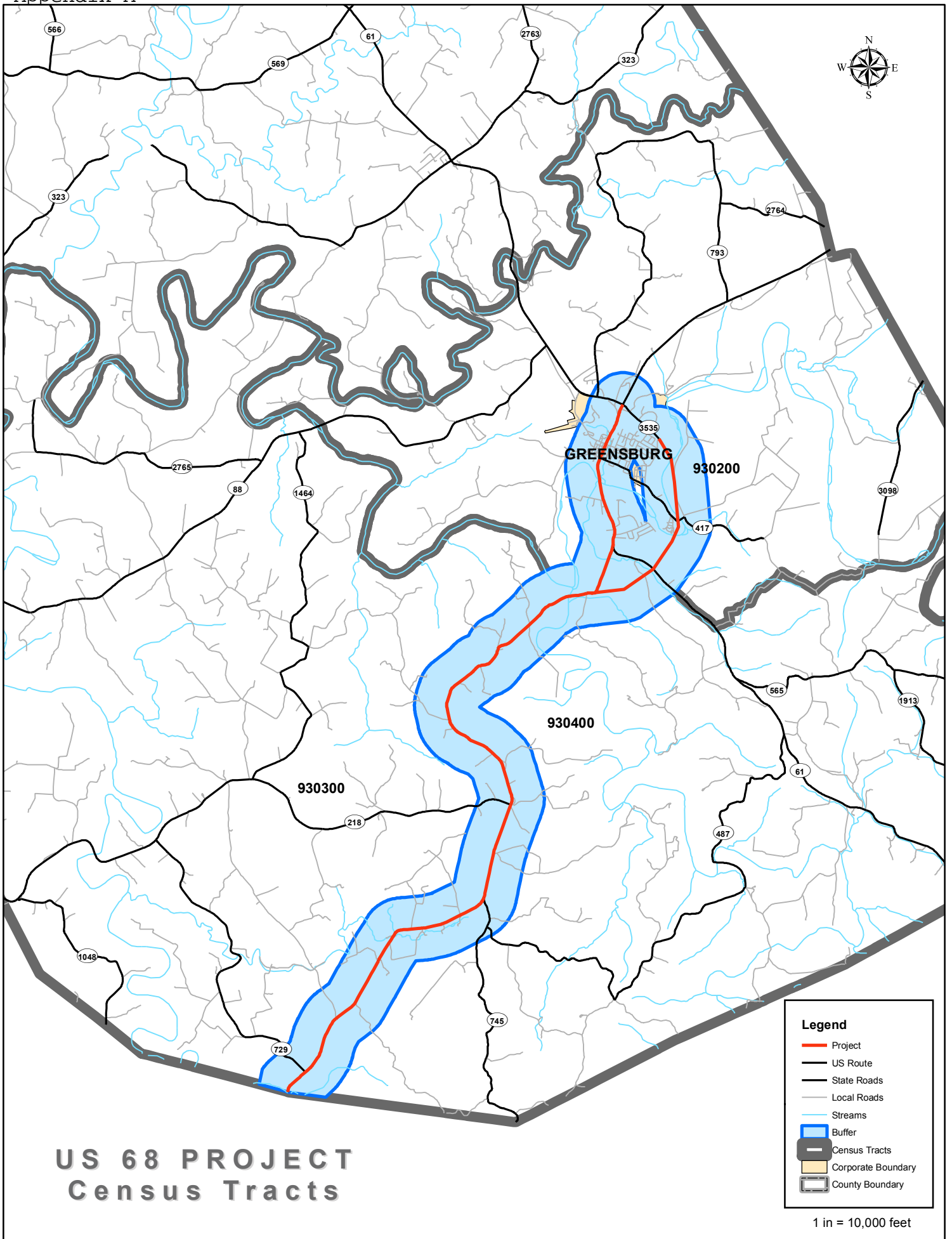
The elevated percentages in the populations below poverty level might be indicative of concentrations throughout the study area. However, based on the economic status of this rural depressed county, these percentages are not uncommon for this area.

Based on the analysis of the data, Green County shows an elevated population of disabled persons compared to those of the state and nation. However, there is not necessarily a concentrated population in this rural county and this project should have no adverse effect on the disabled population.

Though the projects in this study should have no adverse effects on the minority, elderly, low income, or population with a disabilities further consideration should be given to above flagged areas.

Appendices





US 68 PROJECT Census Tracts

1 in = 10,000 feet

Appendix B: Methodology from KYTC

Methodology for Assessing Potential Environmental Justice Concerns for KYTC Planning Studies

Updated: February 1, 2002

The demographics of the affected area should be defined using U.S. Census data (Census tracts and block groups) and the percentages for minorities, low-income, elderly, or disabled populations should be compared to those for the following:

- Other nearby Census tracts and block groups,
- The county as a whole,
- The entire state, and
- The United States.

Information from PVA offices, social service agencies, local health organizations, local public agencies, and community action agencies can be used to supplement the Census data. Specifically, we are interested in obtaining the following information:

- Identification of community leaders or other contacts who may be able to represent these population groups and through which coordination efforts can be made.
- Comparison of the Census tracts and block groups encompassing the project area to other nearby Census tracts and block groups, county, state, and United States percentages.
- Locations of specific or identified minority, low-income, elderly, or disabled population groups within or near the project area. This may require some field reviews and/or discussions with knowledgeable persons to identify locations of public housing, minority communities, ethnic communities, etc., to verify Census data or identify changes that may have occurred since the last Census. Examples would be changes due to new residential developments in the area or increases in Asian and/or Hispanic populations.
- Concentrations or communities that share a common religious, cultural, ethnic, or other background, e.g., Amish communities.
- Communities or neighborhoods that exhibit a high degree of community cohesion or interaction and the ability to mobilize community actions at the start of community involvement.
- Concentrations of common employment, religious centers, and/or educational institutions with members within walking distance of facilities.
- Potential effects, both positive and negative, of the project on the affected groups as compared to the non-target groups. This may include, but are not limited to:
 1. Access to services, employment or transportation.
 2. Displacement of persons, businesses, farms, or non-profit organizations.
 3. Disruption of community cohesion or vitality.
 4. Effects to human health and/or safety.
- Possible methods to minimize or avoid impacts on the target population groups.

If percentages of these populations are elevated within the project area, it should be brought to the attention of the Division of Planning immediately so that coordination with affected populations may be conducted to determine the affected population's concerns and comments on the project. Also, with this effort, representatives of minority, elderly, low-income, or disabled populations should be identified so that, together, we can build a partnership for the region that may be incorporated into other projects. Also, we hope to build a Commonwealth-wide database of contacts. We are available to participate in any meetings with these affected populations or with their community leaders or representatives.

In identifying communities, agencies may consider as a community either a group of individuals living in geographic proximity to one another, or a geographically dispersed/transient set of individuals (such as migrant workers or Native Americans), where either type of group experiences common conditions of environmental exposure or effect. The selection of the appropriate unit of analysis may be a governing body's jurisdiction, a neighborhood, census tract, or other similar unit that is to be chosen so as not to artificially dilute or inflate the affected population. A target population also exists if there is (1) more than one minority or other group present and (2) the percentages, as calculated by aggregating all minority persons, exceed that of the general population or other appropriate unit of geographic analysis.

Maps should be included that show the Census tracts and block groups included in the analysis as well as the relation of the project area to those Census tracts and block groups.

**Appendix C: Statistics for Racial and Ethnic Minorities
Green County Census Data**

REGION	TOTAL POPULATION	Minority		BLACK OR AFRICAN AMERICAN ALONE		AMERICAN INDIAN AND ALASKA NATIVE ALONE		ASIAN ALONE		NATIVE HAWAIIAN AND OTHER PACIFIC ISLANDER ALONE		SOME OTHER RACE ALONE		TWO OR MORE RACES		HISPANIC OR LATINO ORIGIN	
		Total	%	Total	%	Total	%	Total	%	Total	%	Total	%	Total	%	Total	%
United States	308,745,538	85,192,273	27.59	38,929,319	12.61	2,932,248	0.95	14,674,252	4.75	540,013	0.17	19,107,368	6.19	9,009,073	2.92	50,477,594	16.35
Kentucky	4,339,367	529,830	12.21	337,520	7.78	10,120	0.23	48,930	1.13	2,501	0.06	55,551	1.28	75,208	1.73	132,836	3.06
Green County	11,258	483	4.29	224	1.99	40	0.36	17	0.15	1	0.01	56	0.50	145	1.29	159	1.41
Census Tract 9302	4,060	241	5.94	123	3.03	9	0.22	8	0.20	0	0.00	8	0.20	43	1.06	50	1.23
Census Tract 9303	2,423	99	4.09	9	0.37	10	0.41	0	0.00	0	0.00	0	0.00	26	1.07	54	2.23
Census Tract 9304	1,601	85	5.31	32	2.00	10	0.62	1	0.06	0	0.00	0	0.00	26	1.62	16	1.00

Source: 2010 Kentucky State Data Center Census.gov

**Appendix C: Statistics for Age, Poverty, and Disabled Populations
Green County Census Data**

REGION	TOTAL POPULATION	PERSONS 65 AND OVER		PERSONS BELOW POVERTY LEVEL		DISABLED POPULATION AGE 5 AND OVER	
		NUMBER	%	NUMBER	%	NUMBER	%
United States	308,745,538	40,267,984	13.04	48,452,035	15.69	37,465,173	12.13
Kentucky	4,339,367	578,227	13.33	809,764	18.08	726,726	16.75
Green County	11,258	1,946	17.29	2,729	24.24	2,749	24.42
Census Tract 9302	4,060	856	21.08	953	23.47	1,106	27.24
Census Tract 9303	2,423	371	15.31	374	15.44	510	21.05
Census Tract 9304	1,601	253	15.80	122	7.62	439	27.42

Source: Disability Characteristics 2012 American Community Survey 1-year Estimates
Source: US Census Bureau / American FactFinder

Appendix D: Threshold Analysis

Analysis Range Explanation and Methodology for Population Percentages Above or Below Green County Threshold

Percent Racial Minority

Analysis Range	Percent Minority
Significantly Above Threshold (> 125%)	> 5.36%
Just Above Threshold (100% - 125%)	4.29% - 5.36%
REFERENCE THRESHOLD (COUNTY PERCENTAGE)	4.29%
Just Below Threshold (75% - 100%)	2.45% - 4.29%
Significantly Below Threshold (< 75%)	< 3.21%

Percent Hispanic or Latino Origin

Analysis Range	Percent Minority
Significantly Above Threshold (> 125%)	> 1.76%
Just Above Threshold (100% - 125%)	1.41% - 1.76%
REFERENCE THRESHOLD (COUNTY PERCENTAGE)	1.41%
Just Below Threshold (75% - 100%)	1.05% - 1.41%
Significantly Below Threshold (< 75%)	< 1.05%

Percent 65 and Older

Analysis Range	Percent 65 an Older
Significantly Above Threshold (> 125%)	> 21.61%
Just Above Threshold (100% - 125%)	17.29% - 21.61%
REFERENCE THRESHOLD (COUNTY PERCENTAGE)	17.29%
Just Below Threshold (75% - 100%)	12.96% - 17.29%
Significantly Below Threshold (< 75%)	< 12.96%

Percent Below Poverty

Analysis Range	Percent Below Poverty
Significantly Above Threshold (> 125%)	> 30.30%
Just Above Threshold (100% - 125%)	24.24% - 30.30%
REFERENCE THRESHOLD (COUNTY PERCENTAGE)	24.24%
Just Below Threshold (75% - 100%)	18.18% - 24.24%
Significantly Below Threshold (< 75%)	< 18.18%

Percent Disabilities Age 5 and Over

Analysis Range	Percent Disabilities Age 5 and Over
Significantly Above Threshold (> 125%)	> 30.52%
Just Above Threshold (100% - 125%)	24.42% - 30.52%
REFERENCE THRESHOLD (COUNTY PERCENTAGE)	24.42%
Just Below Threshold (75% - 100%)	18.31% - 24.42%
Significantly Below Threshold (< 75%)	< 18.31%